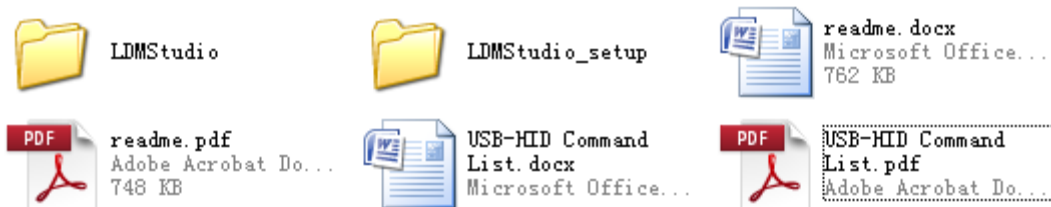


Chapter I LDMStudio Installation

REMARKS: Please close your antivirus programs before the installation, in case of wrong warnings from your antivirus programs.

1. Contents in the Disc:



LDMStudio: Packed Program, please just copy it to your computer. Installation is not needed here;

LDMStudio_setup: Installation Program;

readme.docx: Installation Instruction in 2007 version Words;

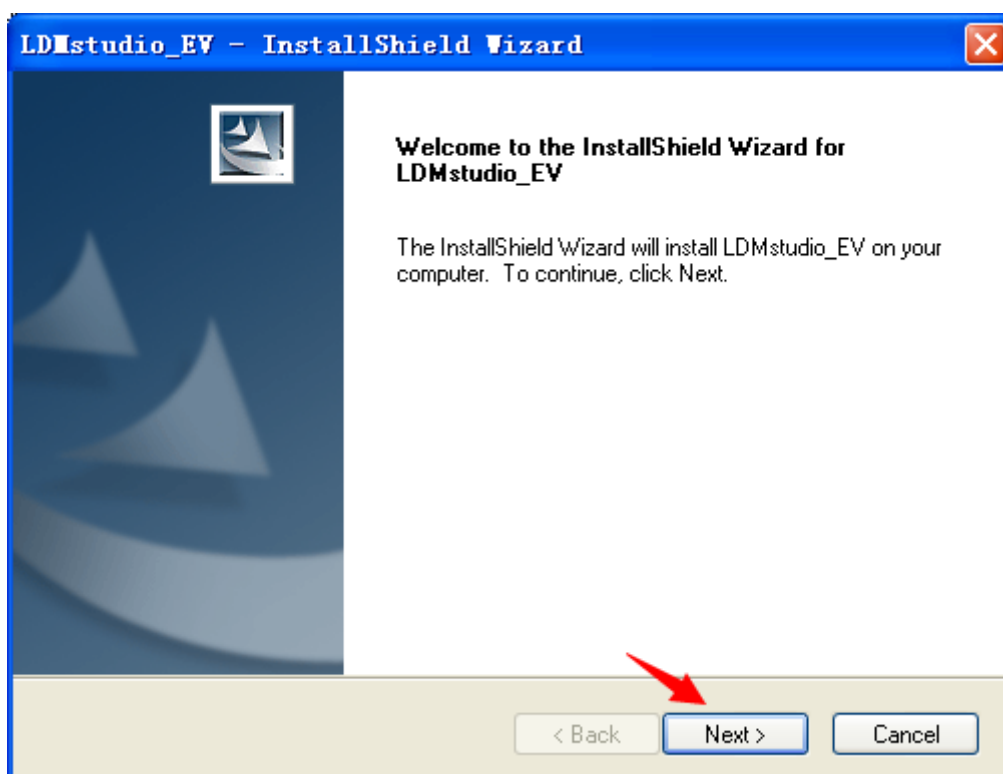
readme.pdf: Installation Instruction in .pdf.

2. Software Installation

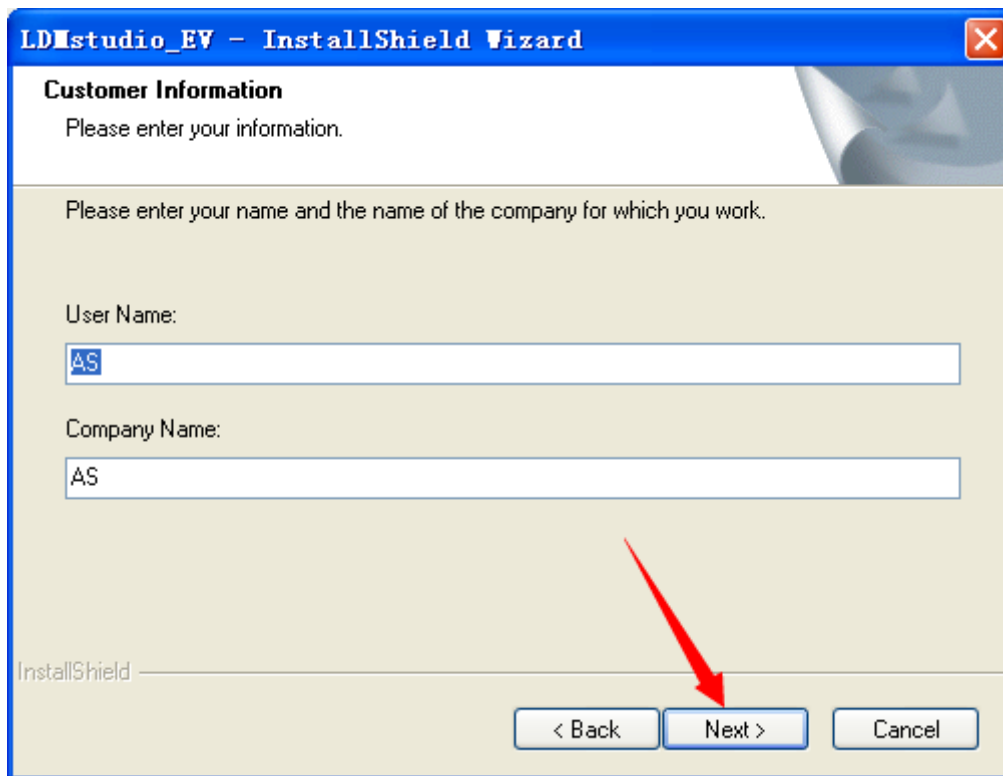
2.1 Open the folder LDMStudio_setup, double click setup.exe to start the installing



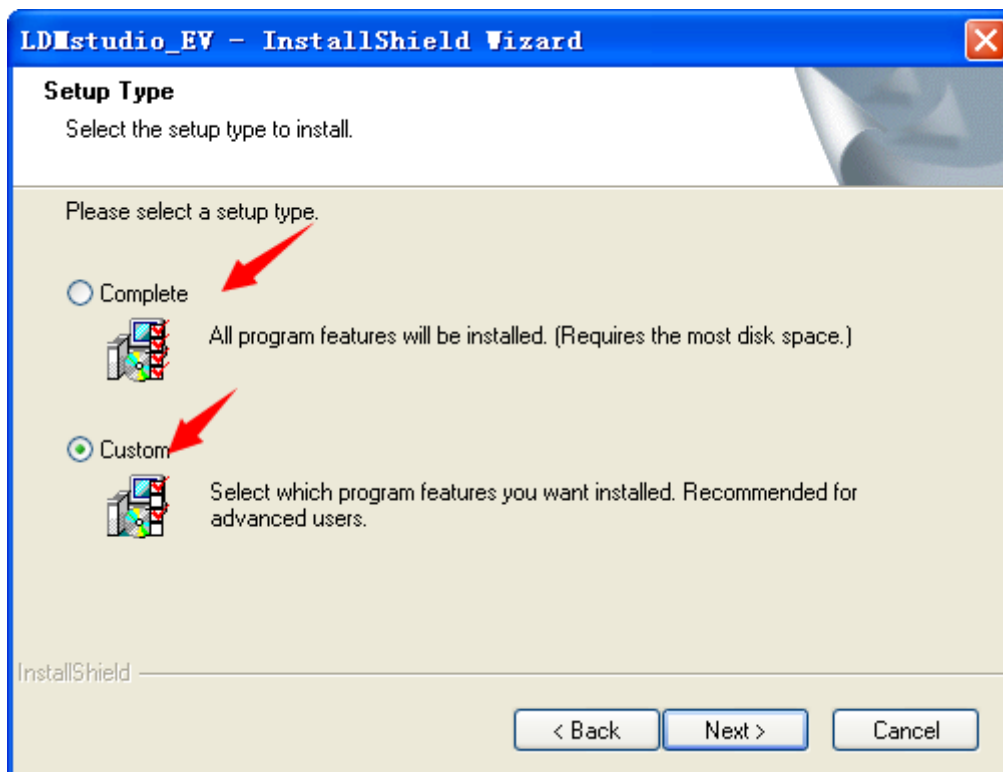
2.2 Click "Next>" when you get the below interface;



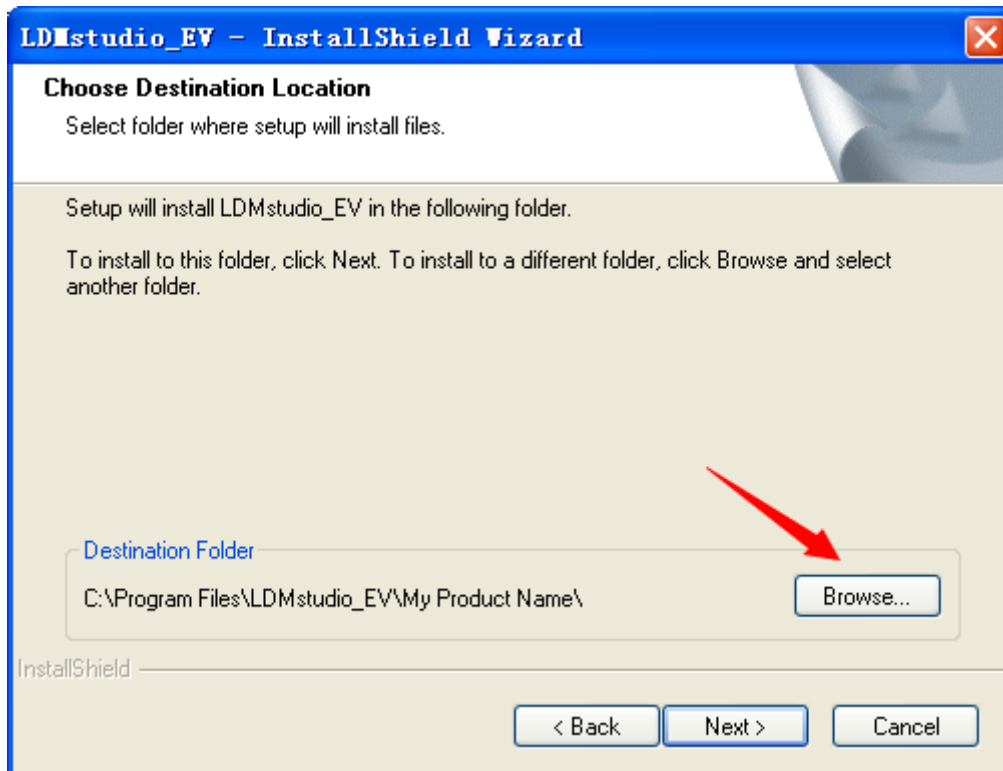
2.3 Enter the user name and company name, and then click “Next>”



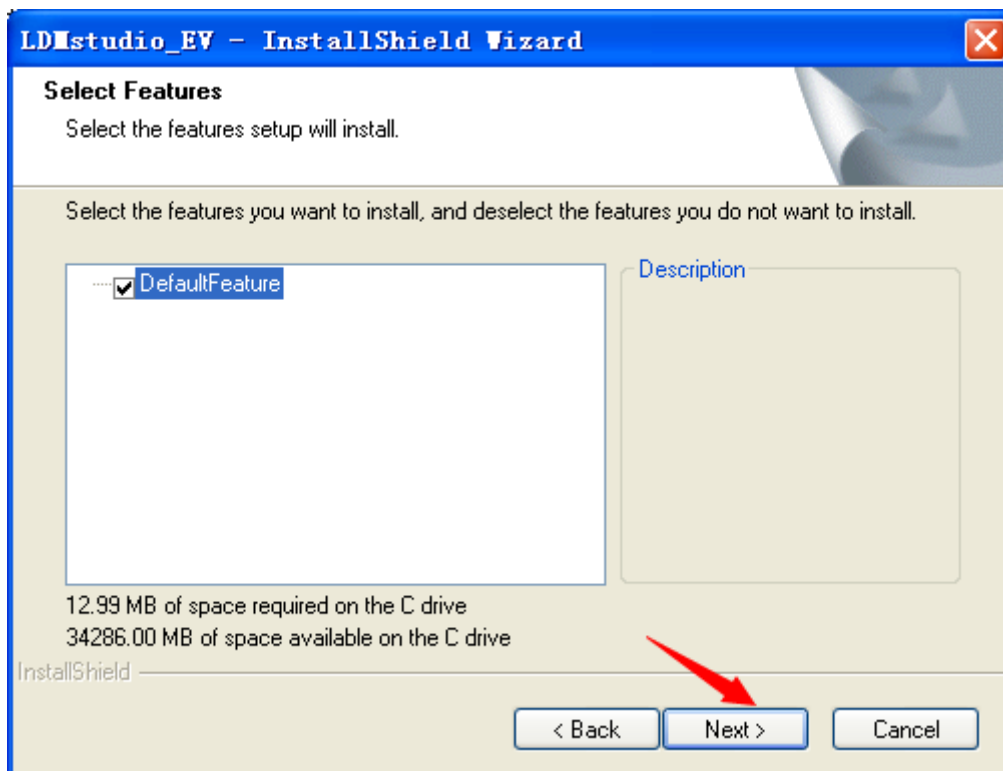
2.4 Click “Complete”, the program will choose a default path for the installation; we choose “Custom” and click “Next>” for example.



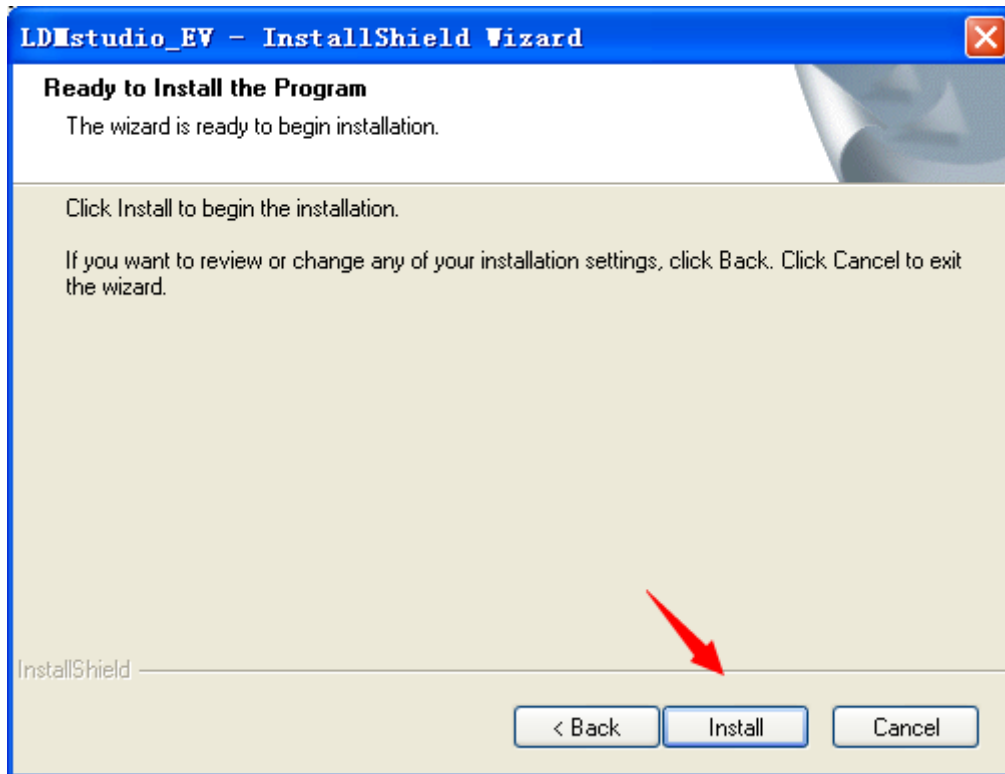
2.5 Click Browse to revise the installing path, and then click “Next>”.



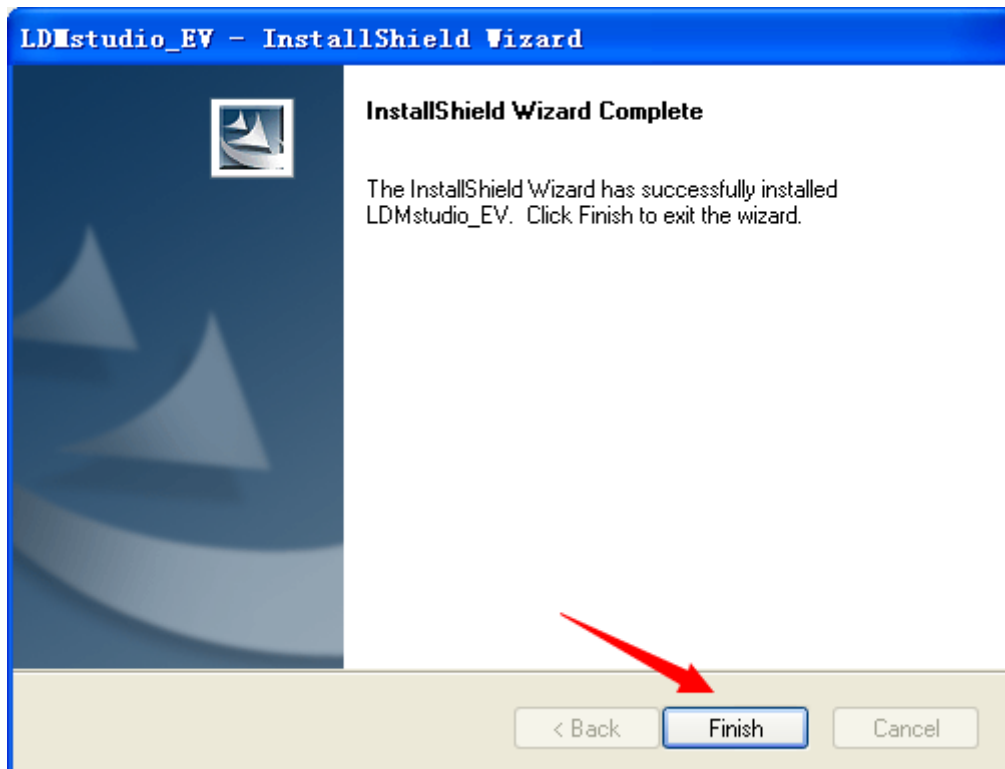
2.6 Click “Next>” to continue.



2.7 Click "Install" to start the installation.



2.8 Click "Finish". The Installation is completed.

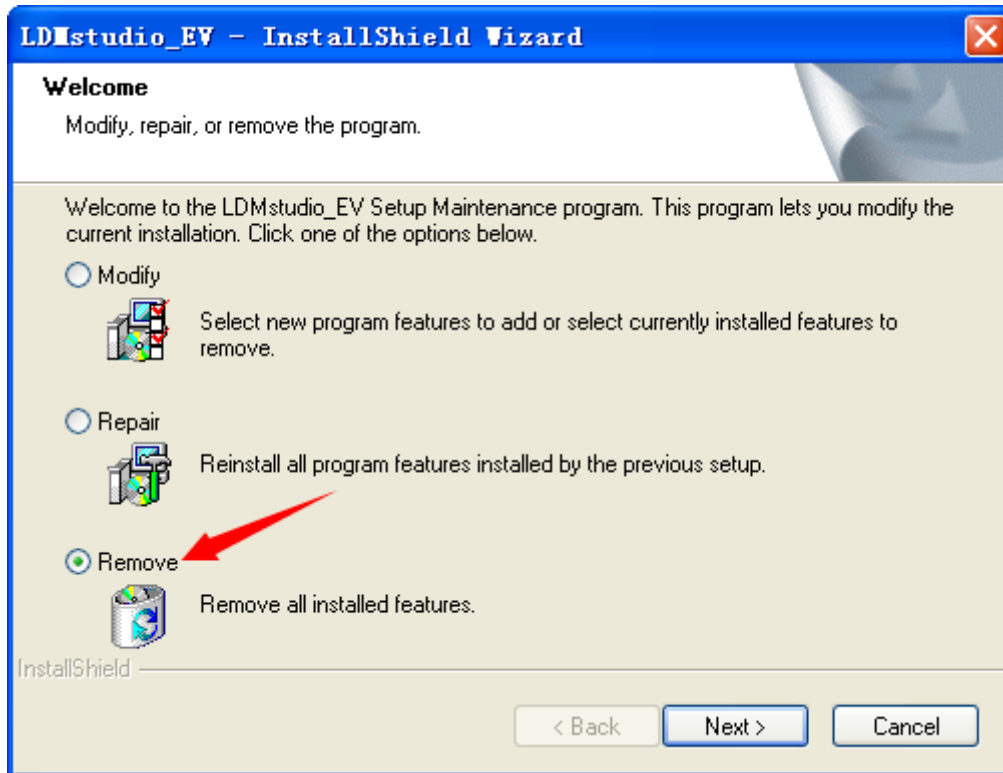


3. Program Uninstallation

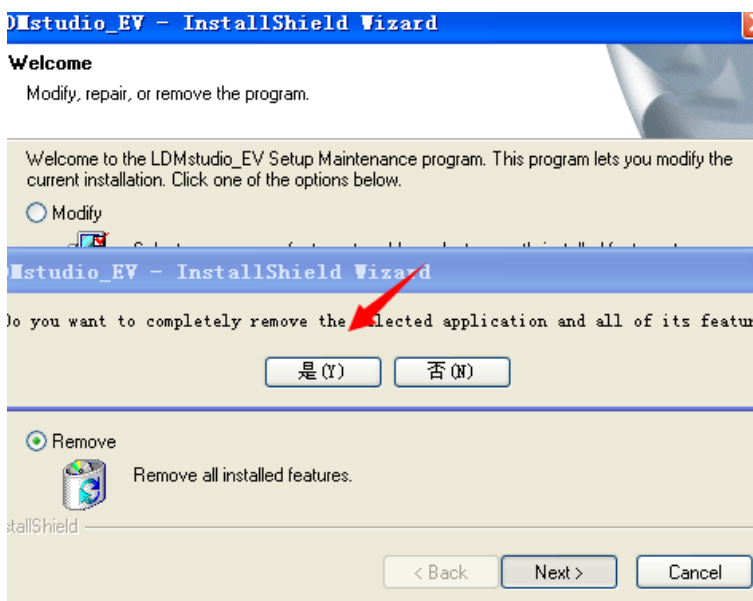
3.1 Installation and Uninstallation is the same file. Open folder LDMstudio_setup, double click setup.exe to start uninstalling.



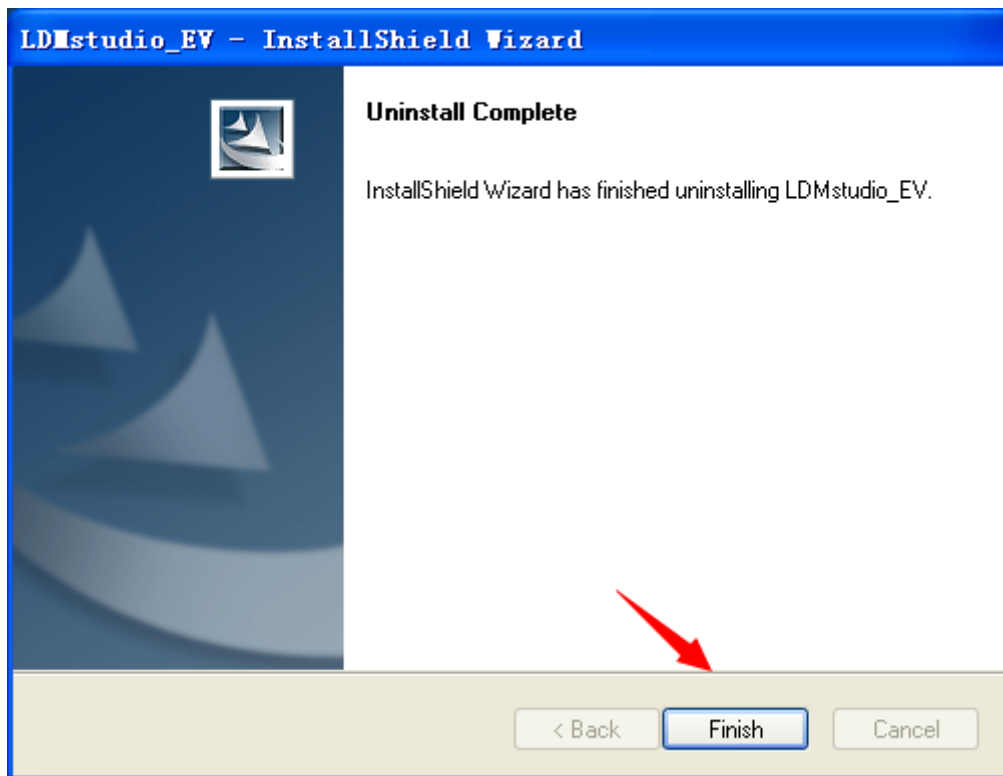
3.2 Select "Remove" and then click "Next>".



3.3 Click "Y" when you get the below interface.



3.4 Click "Finish" to end the uninstalling.



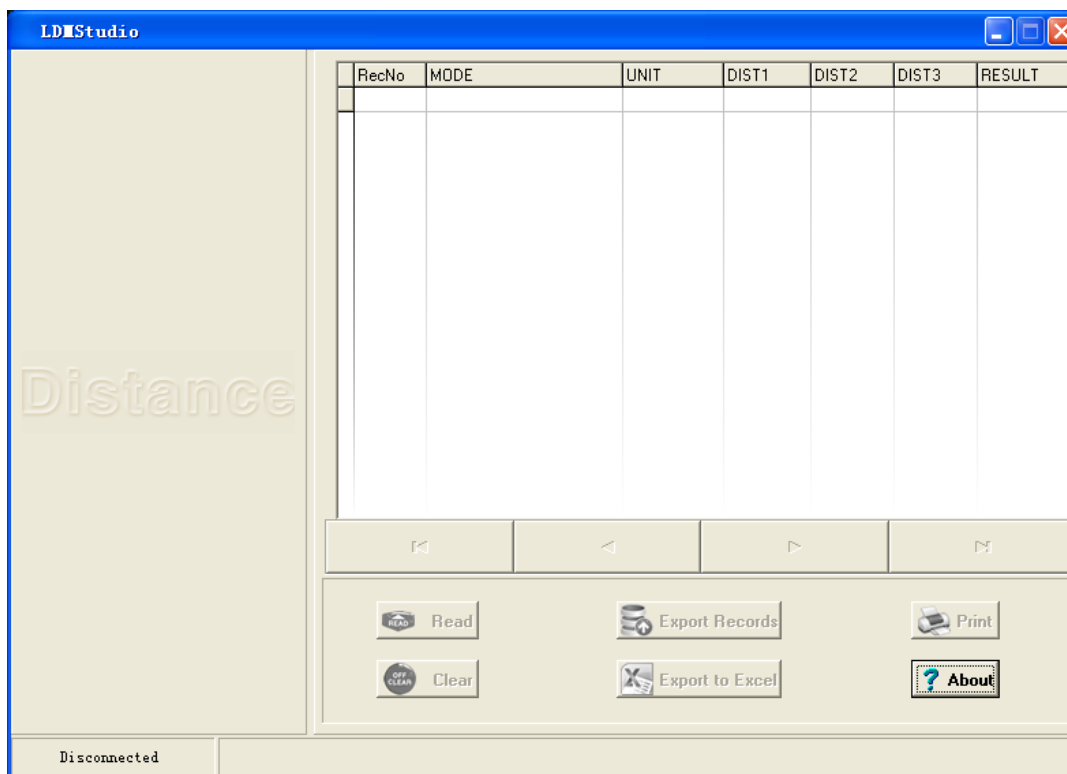
Chapter II Program Instruction

1. Connect the meter with PC.

1.1 Double click the icon LDMStudio to run the program



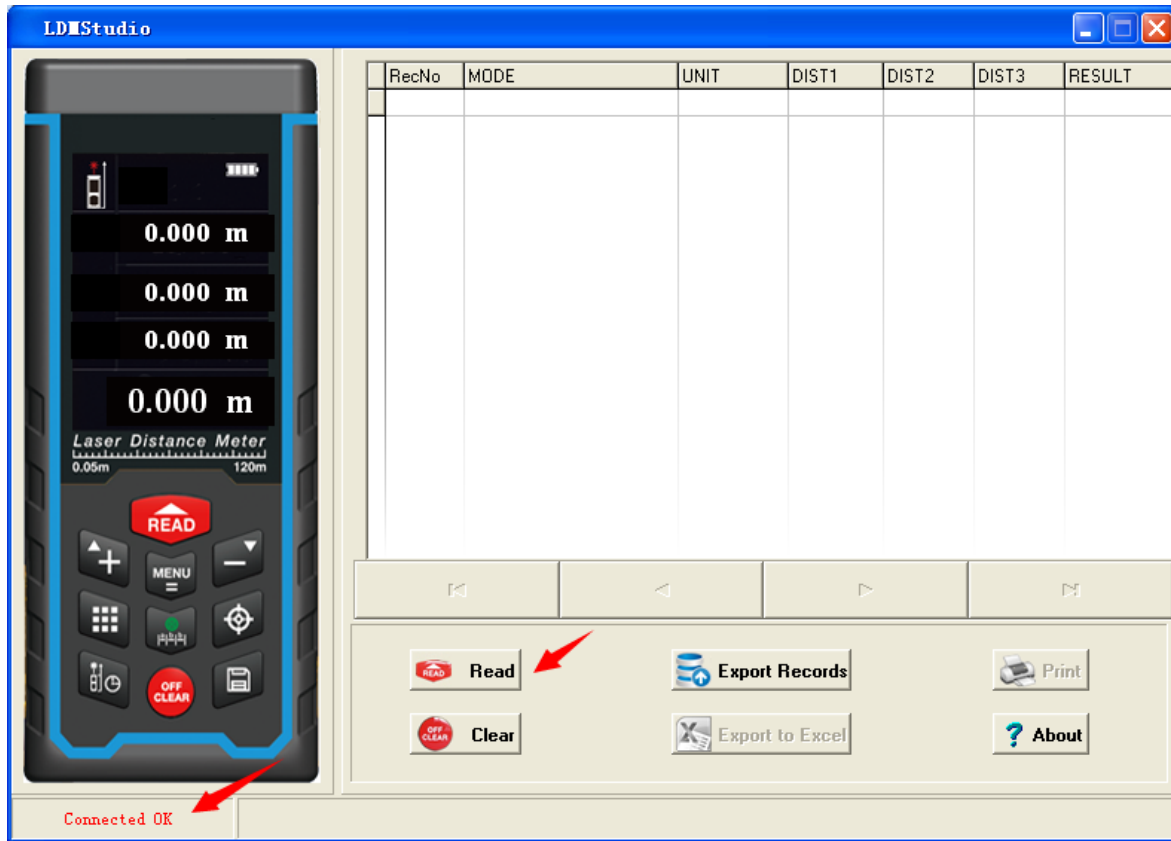
1.2 Interface of the Program



1.3 Connect the meter and PC with USD connector.



1.4 “Connected OK” will be shown at the left bottom of the interface when the connection is successful. The buttons in the interface can be operated.



2. Operation

2.1 Obtain the measuring data.

Click “Read” once, laser release, click “Read” again to get the result.



2.2 Clear up the measuring data.

Click “Clear” to clear up the data on the screen.



2.3 Obtain the measuring record.

Click “Export Records” to deliver the measuring records to the program.



	RecNo	MODE	UNIT	DIST1	DIST2	DIST3	RESULT
	1	Distance	m	0.000 m	0.000 m	0.000 m	0.999 m
	2	Distance	m	0.000 m	0.000 m	0.000 m	0.841 m
	3	Distance	m	0.000 m	0.000 m	0.000 m	2.005 m
	4	Area	m	2.671 m	2.688 m	0.000 m	7.180 m2
	5	Volume	m	2.668 m	2.695 m	2.704 m	19.442 m3
	6	Pythagorean 1 a&b	m	55.1 °C	2.636 m	1.508 m	2.162 m

2.4 Click “Export to Excel”, revise the file name and path in the popup and then click “save” to upload the measuring records to PC in .xlsx file.

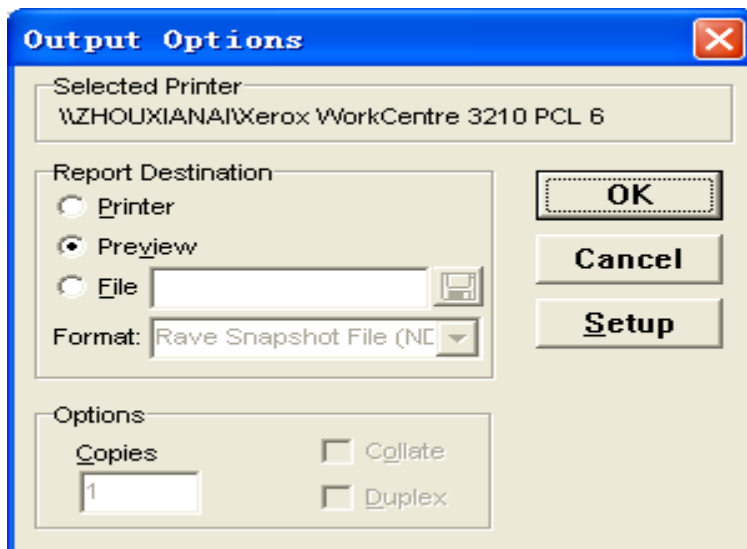


2.5 Print the records.

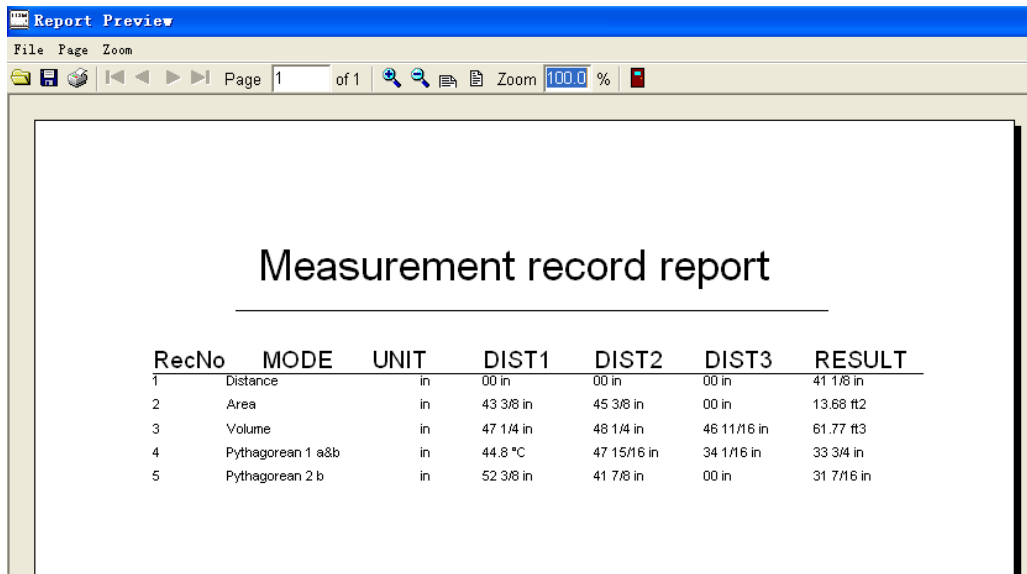
2.5.1 Press “Print” after uploading.



2.5.2 Click “OK” to preview.



2.5.3 Preview Interface



2.5.4 Click "Print".



2.5.5 Click "OK" for printing.

